

BOARD OF PUBLIC WORKS
MEMBERS

GREG GOOD
PRESIDENT

AURA GARCIA
VICE PRESIDENT

DR. MICHAEL R. DAVIS
PRESIDENT PRO TEMPORE

JESSICA CALOZA
COMMISSIONER

M. TERESA VILLEGAS
COMMISSIONER

CITY OF LOS ANGELES

CALIFORNIA



ERIC GARCETTI
MAYOR

OFFICE OF THE
BOARD OF PUBLIC WORKS

DR. FERNANDO CAMPOS
EXECUTIVE OFFICER

200 NORTH SPRING STREET
ROOM 361, CITY HALL
LOS ANGELES, CA 90012

TEL: (213) 978-0261
TDD: (213) 978-2310
FAX: (213) 978-0278

<http://bpw.lacity.org>

July 30, 2021

Council Hearing – 08/10/2021
Council File No. 21-0900-S25

City Council
Room No. 395
City Hall

Honorable Members:

ASSESSMENT HEARING # 2 – WITZEL DRIVE AND HOLLYLINE AVENUE NO. 2

Inasmuch as no one protested the assessments pursuant to the hearing scheduled this date, in connection with the maintenance for Witzel Drive and Hollyline Avenue No. 2 - Street Lighting Maintenance Assessment District, the Board of Public Works recommends that the assessments therefore be confirmed.

Sincerely,

DR. FERNANDO CAMPOS,
Executive Officer, Board of Public Works

FC:LC

CC: Director, Bureau of Street Lighting



DEPARTMENT OF PUBLIC WORKS
BUREAU OF STREET LIGHTING

DATE MAR 24 2021

C.D. 04

Honorable City Council
of the City of Los Angeles

**WITZEL DRIVE AND HOLLYLINE AVENUE NO.2
STREET LIGHTING MAINTENANCE ASSESSMENT DISTRICT**

This report submits the proposed Ordinance of Intention to institute maintenance assessment proceedings for the above street lighting project.

RECOMMENDATIONS

1. Council adopt this report and the Ordinance of Intention, and that the proceedings be conducted in accordance with Sections 6.95 - 6.127 of the Los Angeles Administrative Code, Section 53753 of the California Government Code, and Proposition 218 (Articles XIII C and XIII D of the California Constitution). This includes Council holding a Public Hearing for the proposed District Diagram with City page numbers 15546.
2. Upon Council adoption of the Ordinance of Intention, the Bureau of Street Lighting be instructed to: Mail notices of the assessment ballot proceedings, and Mail assessment ballots (as required by Prop. 218) to the property owners in the lighting district.
3. Upon completion of Item 2 above, the City Clerk be instructed to conduct the assessment ballot proceedings (i.e. count, certify, and report the results of the assessment ballot proceedings to the Council).
4. Following the conclusion of the final public hearing, if a project has weighted "YES" votes equal to, or in excess of weighted "NO" votes, the Council shall deny the appeals, confirm the maintenance assessments, and adopt the Final Ordinance levying the assessments. If the weighted "NO" votes are in excess of weighted "YES" votes, Council will abandon the lighting district and proceedings in accordance with Proposition 218; and the affected street lighting system shall be removed from service or not be constructed.
5. A copy of this report be provided to each affected Council office and the Mayor's Office of Economic Development.

The passage of Proposition 218 on November 5, 1996, requires a vote of the property owners prior to Council confirming and levying the assessments for maintenance. Upon adoption of the transmitted Ordinance of Intention, the Council shall set a date for hearing appeals and the last day to receive completed assessment ballots. A hearing to be held by the Board of Public Works will be scheduled at least one week prior to the date of the public hearing for the City Council to review and resolve any appeals concerning the proposed maintenance assessments – as specified in the Engineer's Report. If the assessment ballot proceeding as required by Proposition 218 approves these assessments, the City Council may confirm and levy the assessments. If levied, the administration of this district may be combined with that of another district or districts in the future as provided in the Ordinance of Intention. Protests that are received, as described in the Administrative Code, are for the consideration of the Council, but are not binding. Only a weighted majority vote against the assessment is binding.

The assessments to be levied to pay for the cost and expenses of the work or improvements in the proposed WITZEL DR AND HOLLYLINE AVE NO. 2 Street Lighting Maintenance Assessment District (or Sidewalk Maintenance Assessment District) fall within the (e)7 exemption of Prop 26. As set forth in the accompanying Ordinance of Intention, said assessments will be imposed in accordance with the provisions of Article XIID of the California Constitution.

In accordance with Council Policy adopted on December 11, 1998, the Bureau of Street Lighting will cast ballots in favor of the assessments for all Council controlled public properties in the district.

SUMMARY

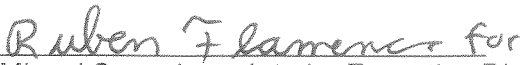
TOTAL STREETLIGHTS:	2
AFFECTED PARCELS:	5
TOTAL ASSESSMENTS:	\$ 590.10
TAX YEAR:	2020/2021
TYPE OF PROJECT:	PROPOSED PRIVATE DEVELOPMENT PROJECT

TRANSMITTALS

1. Ordinance of Intention, approved as to form and legality by the City Attorney, for the proposed assessment district.
2. Engineer's Report as required by Proposition 218.
3. Proposed assessment roll.
4. Diagram delineating those lands proposed to be assessed.

Report prepared by:
Assessment Engineering Division
Proposition 218 Compliance Section
SA, Street Lighting Engineering Associate I
Ruben Flamenco, P.E., Division Manager

Respectfully submitted,


Miguel Sangalang, Interim Executive Director
Bureau of Street Lighting

A detailed geological cross-section of a mountain range. The left side shows a steep, rocky slope with a small building at its base. The center features a prominent, jagged peak. The right side shows a more gradual slope with a small building and a road. The entire section is labeled with various geological terms and measurements.

PRIOR TO THE FOLLOWING DATES, THE LISTED PARCELS WERE ASSESSED UNDER THE REFERENCE NUMBERS AS SHOWN

DATE	NO.	PREVIOUS REFERENCE	DISC	PAGE	PART
1947	1				
1948	2				
1949	3				
1950	4				
1951	5				
1952	6				
1953	7				
1954	8				
1955	9				
1956	10				
1957	11				
1958	12				
1959	13				
1960	14				
1961	15				
1962	16				
1963	17				
1964	18				
1965	19				
1966	20				
1967	21				
1968	22				
1969	23				
1970	24				
1971	25				
1972	26				
1973	27				
1974	28				
1975	29				
1976	30				
1977	31				
1978	32				
1979	33				
1980	34				
1981	35				
1982	36				
1983	37				
1984	38				
1985	39				
1986	40				
1987	41				
1988	42				
1989	43				
1990	44				
1991	45				
1992	46				
1993	47				
1994	48				
1995	49				
1996	50				
1997	51				
1998	52				
1999	53				
2000	54				
2001	55				
2002	56				
2003	57				
2004	58				
2005	59				
2006	60				
2007	61				
2008	62				
2009	63				
2010	64				
2011	65				
2012	66				
2013	67				
2014	68				
2015	69				
2016	70				
2017	71				
2018	72				
2019	73				
2020	74				
2021	75				
2022	76				
2023	77				
2024	78				
2025	79				
2026	80				
2027	81				
2028	82				
2029	83				
2030	84				
2031	85				
2032	86				
2033	87				
2034	88				
2035	89				
2036	90				

COUNCIL DISTRICT NO	4
PROJECT ID NO	5255

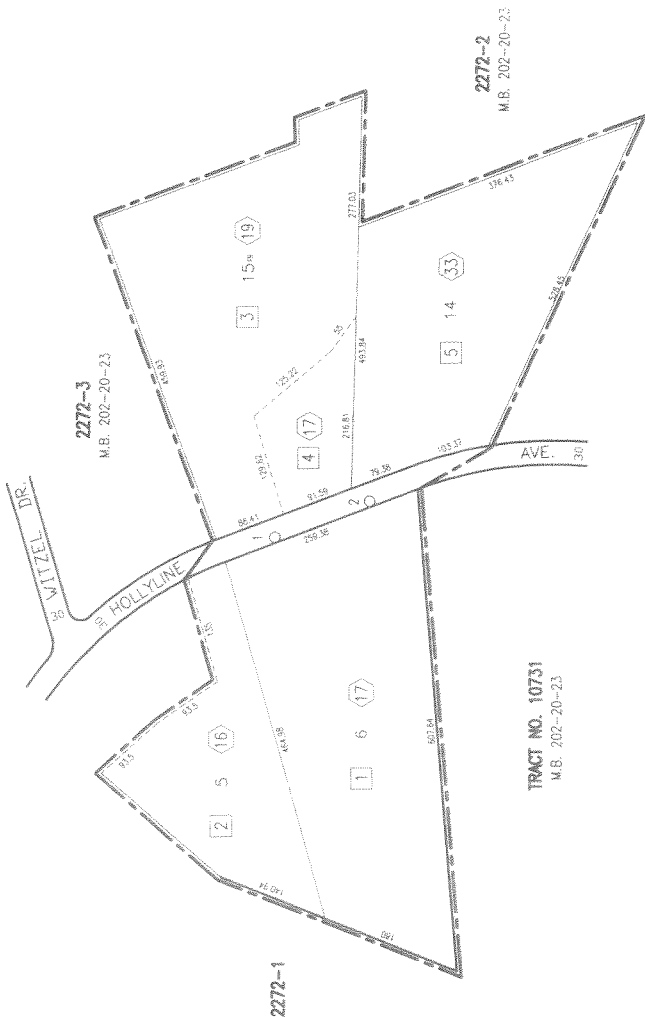
DISTRICT OUTLINED BY Paul Abrahams
DISTRICT CHECKED BY Ruben Faneva
APPROVED March 10, 2021

Ruben + ^{Francis} Sammons for

in Ser.	Date	by	P.M.	1628153
Drawn	1-19-21	Q.L.	W.D.	
Checked	2-16-21	J.A.	BR205976	Page
Thomas Guide Page		562	Grid	B5

15546

\\DPSD\CAD\autocad\firmware\reflow\reflowline2.dwg Mar 10, 2024 - 12:42pm



MAINTENANCE ASSESSMENT DIAGRAM
FOR PROPOSITION 218 REQUIREMENTS
SHOWING LOCATION OF ELECTROLES AND THE
EXTENT OF THE TERRITORY INCLUDED WITHIN THE
ASSESSMENT DISTRICT

FOR THE FURNISHING OF ELECTRIC ENERGY & MAINTENANCE FOR
THE LIGHTING OF SAID DISTRICT IN THE CITY OF LOS ANGELES

HERBERT R. MARINE, JR., ASSISTANT DIRECTOR - BUREAU OF STREET
LIGHTING

THE EXTENSION JURISDICTION OF THE ASSESSMENT DISTRICT ARE SHOWN

①	Indicates L.A. County APN	⑥	Indicates New Electrometer	B-2
②	Indicates L.A. City Assessor's Number	⑦	Indicates New Transformer	B-2
③	Indicates New Electrometer	⑧	Indicates New Transformer	B-2
④	Indicates New Transformer	⑨	Indicates New Transformer	B-2
⑤	Indicates New Transformer	⑩	Indicates New Transformer	B-2

413 Thomas Guide Page	Sheet: 1 of 1
15546	15546
WITZEL DR. & HOLLYLINE AVE. NO.2 L.D.	15546